



# Test Report

Report No:TQT5486B01E

Date:Mar.20, 2026

Page 1 of 10

**Applicant** QINGDAO HOPESTAR TRADE CO.,LTD  
**Address** #183, YICHUNROAD,QNGDAO ,CHINA

The following sample(s)was /were submitted and identified on behalf of the clients as :

**Sample Name** Eyelash Practice Head with Interchangeable Eyes  
**Model No.** /  
**Additional Model** /  
**Trademark** /  
**Manufacturer** QINGDAO HOPESTAR TRADE CO.,LTD  
**Address** #183, YICHUNROAD,QNGDAO ,CHINA  
**Sample Received Date** Mar.10, 2026  
**Testing Period** Mar.10, 2026 - Mar.20, 2026  
**Test Requested Test Method** Test samples according to customer requirements  
**Test Result** Please refer to next page(s)

OYolpep 46dpNtX

**Signed for and on behalf of:**


Liw wang,Manager

Date of issue : Mar.20, 2026

Shenzhen Tianqi Testing Technology Service Co., Ltd.

This test report is issued by our company in accordance with the service terms printed on the back. Responsibilities, warranties, and legal limitations are defined in the service terms. Unless otherwise stated, the results of this report are solely for the test sample. This report may not be reproduced in part without permission.

Shenzhen Tianqi Testing Technology Service Co., Ltd.

6th Floor, Bui Iding B, Quewei Building, No. 5 Fuyu Road, Pinghu Street, Longgang District, Shenzhen,Guangdong, China

Tel: 4008857980

Website: www.tqts.com

E-mail: service@tqts.com



# Test Report

Report No:TQT5486B01E

Date:Mar.20, 2026

Page 2 of 10

## RESULT SUMMARY:

No.	Standard and Requirement	Conclusion(s)
1	RoHS Directive 2011/65/EU -XRF scanning	PASS
2	RoHS Directive 2011/65/EU and its subsequent amendments (EU)2015/863 -Pb/Cd/Hg/CrVI Content -Polybrominated diphenylethers(PBDEs) -Polybrominated biphenyls(PBBs) -Phthalates	PASS

This test report is issued by our company in accordance with the service terms printed on the back. Responsibilities, warranties, and legal limitations are defined in the service terms. Unless otherwise stated, the results of this report are solely for the test sample. This report may not be reproduced in part without permission.

Shenzhen Tianqi Testing Technology Service Co., Ltd.

6th Floor, Bui Iding B, Quewei Building, No. 5 Fuyu Road, Pinghu Street, Longgang District, Shenzhen, Guangdong, China

Tel: 4008857980

Website: [www.tqts.com](http://www.tqts.com)

E-mail: [service@tqts.com](mailto:service@tqts.com)



# Test Report

Report No:TQT5486B01E

Date:Mar.20, 2026

Page 3 of 10

## Test Content:

Test Item(s)	Test Method	Reference	Unit	Limit	MDL
Cadmium(Cd)	EN 62321-5-2014	ICP-OES	mg/kg	100	10
Lead(Pb)	EN 62321-5-2014	ICP-OES	mg/kg	1000	10
Mercury(Hg)	EN 62321-4-2014+AMD1:2017	ICP-OES	mg/kg	1000	10
Hexavalent Chromium(CrVI) (Metal)	EN 62321-7-1-2015	UV-Vis	µg/cm <sup>2</sup>	0.13	0.1
Hexavalent Chromium(CrVI) (Nonmetal)	EN 62321-7-2-2017	UV-Vis	mg/kg	1000	10
PBBs (Next form)	EN 62321-6-2015	GC-MS	mg/kg	1000	10
PBDEs (Next form)	EN 62321-6-2015	GC-MS	mg/kg	1000	10
Dibutyl Phthalate(DBP)	EN 62321-8-2017	GC-MS	mg/kg	1000	100
Butyl benzyl phthalate (BBP)	EN 62321-8-2017	GC-MS	mg/kg	1000	100
Di-(2-ethylhexyl) Phthalate(DEHP)	EN 62321-8-2017	GC-MS	mg/kg	1000	100
Diisobutyl phthalate (DIBP)	EN 62321-8-2017	GC-MS	mg/kg	1000	100

PBBs		PBDEs	
Monobromobiphenyl	Hexabromobiphenyl	Monobromodiphenyl ether	Hexabromodiphenyl ether
Dibromobiphenyl	Heptabromobiphenyl	Dibromodiphenyl ether	Heptabromodiphenyl ether
Tribromobiphenyl	Octabromobiphenyl	Tribromodiphenyl ether	Octabromodiphenyl ether
Tetrabromobiphenyl	Nonabromobiphenyl	Tetrabromodiphenyl ether	Nonabromodiphenyl ether
Pentabromobiphenyl	Decabromobiphenyl	Pentabromodiphenyl ether	Decabromodiphenyl ether

This test report is issued by our company in accordance with the service terms printed on the back. Responsibilities, warranties, and legal limitations are defined in the service terms. Unless otherwise stated, the results of this report are solely for the test sample. This report may not be reproduced in part without permission.



# Test Report

Report No:TQT5486B01E

Date:Mar.20, 2026

Page 4 of 10

## Sample Description:

No.	Name	Description
1	head	nonmetal
2	eye	nonmetal
3	eyelash	nonmetal
4	nose	nonmetal
5	ear	nonmetal
6	back	nonmetal

This test report is issued by our company in accordance with the service terms printed on the back. Responsibilities, warranties, and legal limitations are defined in the service terms. Unless otherwise stated, the results of this report are solely for the test sample. This report may not be reproduced in part without permission.

Shenzhen Tianqi Testing Technology Service Co., Ltd.

6th Floor, Bui Iding B, Quewei Building, No. 5 Fuyu Road, Pinghu Street, Longgang District, Shenzhen, Guangdong, China

Tel: 4008857980

Website: [www.tqts.com](http://www.tqts.com)

E-mail: [service@tqts.com](mailto:service@tqts.com)



# Test Report

Report No:TQT5486B01E

Date:Mar.20, 2026

Page 5 of 10

## 1. Test results:

XRF Scanning-RoHS Directive 2011/65/EU

Methods:IEC 62321-3-1:2013 analysis by X-ray fluorescence spectrometry(XRF).

No.	Element											Conclusion
	Pb	Cd	Hg	Cr	Cr <sup>6+</sup>	PBBs	PBDEs	DBP	BBP	DEHP	DIBP	
1	BL	BL	BL	--	BL	BL	BL	BL	BL	BL	BL	Pass
2	BL	BL	BL	--	BL	BL	BL	BL	BL	BL	BL	Pass
3	BL	BL	BL	--	BL	BL	BL	BL	BL	BL	BL	Pass
4	BL	BL	BL	--	BL	BL	BL	BL	BL	BL	BL	Pass
5	BL	BL	BL	--	BL	BL	BL	BL	BL	BL	BL	Pass
6	BL	BL	BL	--	BL	BL	BL	BL	BL	BL	BL	Pass

## Note:

a. It is the result on total Br while test item on restricted substances is PBBs/PBDEs. It is the result on total Cr while test item on restricted substances is Cr(VI).

b. The XRF screening test for RoHS elements-The reading may be different to the actual content in the sample be of non-uniformity composition.

c. Results are obtained by EDXRF for primary screening, and further chemical testing by ICP-OES (for Pb, Cd, Hg), UV-VIS for Cr(VI) and GC-MS (for PBBs/PBDEs) is recommended to be performed if the concentration exceeds the below warning value according to IEC 62321-3-1:2013.

XRF Screening limits for different matrices:

Materials	Concentration (mg/kg)				
	Cd	Cr	Pb	Hg	Br
Polymeric	BL≤60<X<140≤OL	BL≤640<X	BL≤670<X<1330≤OL	BL≤660<X<1340≤OL	BL≤290<X
Metallic	BL≤60<X<140≤OL	BL≤640<X	BL≤670<X<1330≤OL	BL≤660<X<1340≤OL	--
Composite materials	BL≤40<X<160≤OL	BL≤440<X	BL≤470<X<1530≤OL	BL≤460<X<1540≤OL	BL≤240<X

(a) BL=Below Limit, OL=Over Limit, X=Inconclusive, LOD=Limit of Detection, --=Not regulated.

(b) The XRF screening test for RoHS elements-the reading may be different to actual content in the sample be of non-uniformity composition

## (3) Chemical Method

① With reference to IEC 62321-5:2013, determination of Cadmium, Lead by ICP-OES.

② With reference to IEC62321-4:2013+AMD1:2017 CSV, determination of Mercury by ICP-OES.

This test report is issued by our company in accordance with the service terms printed on the back. Responsibilities, warranties, and legal limitations are defined in the service terms. Unless otherwise stated, the results of this report are solely for the test sample. This report may not be reproduced in part without permission.

Shenzhen Tianqi Testing Technology Service Co., Ltd.

6th Floor, Bui Iding B, Quewei Building, No. 5 Fuyu Road, Pinghu Street, Longgang District, Shenzhen, Guangdong, China

Tel: 4008857980

Website: www.tqtts.com

E-mail: service@tqtts.com



# Test Report

Report No:TQT5486B01E

Date:Mar.20, 2026

Page 6 of 10

③With reference to IEC 62321-7-1:2015&IEC 62321-7-2:2017,determination of Hexavalent Chromium by Colorimetric method using UV-Vis.

④With reference to IEC 62321-6:2015,determination of PBBs and PBDEs by GC-MS.

⑤With reference to IEC 62321-8:2017,determination of Phthalates by GC-MS.

(4)(a)mg/kg=0.0001%,MDL=MDL=Method Detection Limit,(c)ND=Not Detected(<MDL), --=Not Regulated

(b)Unit and MD Lin wet chemical test

Test Item	Pb	Cd	Hg	DBP	BBP	DEHP	DIBP
Unit	mg/kg	mg/kg	mg/kg	mg/kg	mg/kg	mg/kg	mg/kg
MDL	10	10	10	100	100	100	100

The MDL for single compound of PBBs and PBDEs is 100 mg/kg

MDL of Cr(VI)for polymer and composite sample is 10 mg/kg

MDL of Cr(VI)for metal sample is 0.10ug/cm<sup>2</sup>

(c)V=Metal sample

a.The sample is negative for Cr<sup>6+</sup>if Cr<sup>6+</sup>is N.D.(below the limit 0.10ug/cm<sup>2</sup>).The coating is considered a non Cr<sup>6+</sup> based coating.

b.The sample positive for Cr<sup>6+</sup>if the Cr<sup>6+</sup>concentration is greater than 0.13ug/cm<sup>2</sup>.The sample coating is considered to contain Cr<sup>6+</sup>.

c.The result between 0.10ug/cm<sup>2</sup>and 0.13ug/cm<sup>2</sup>is considered to be inconclusive unavoidable coating variations may influence the determination.

This test report is issued by our company in accordance with the service terms printed on the back. Responsibilities, warranties, and legal limitations are defined in the service terms. Unless otherwise stated, the results of this report are solely for the test sample. This report may not be reproduced in part without permission.

Shenzhen Tianqi Testing Technology Service Co., Ltd.

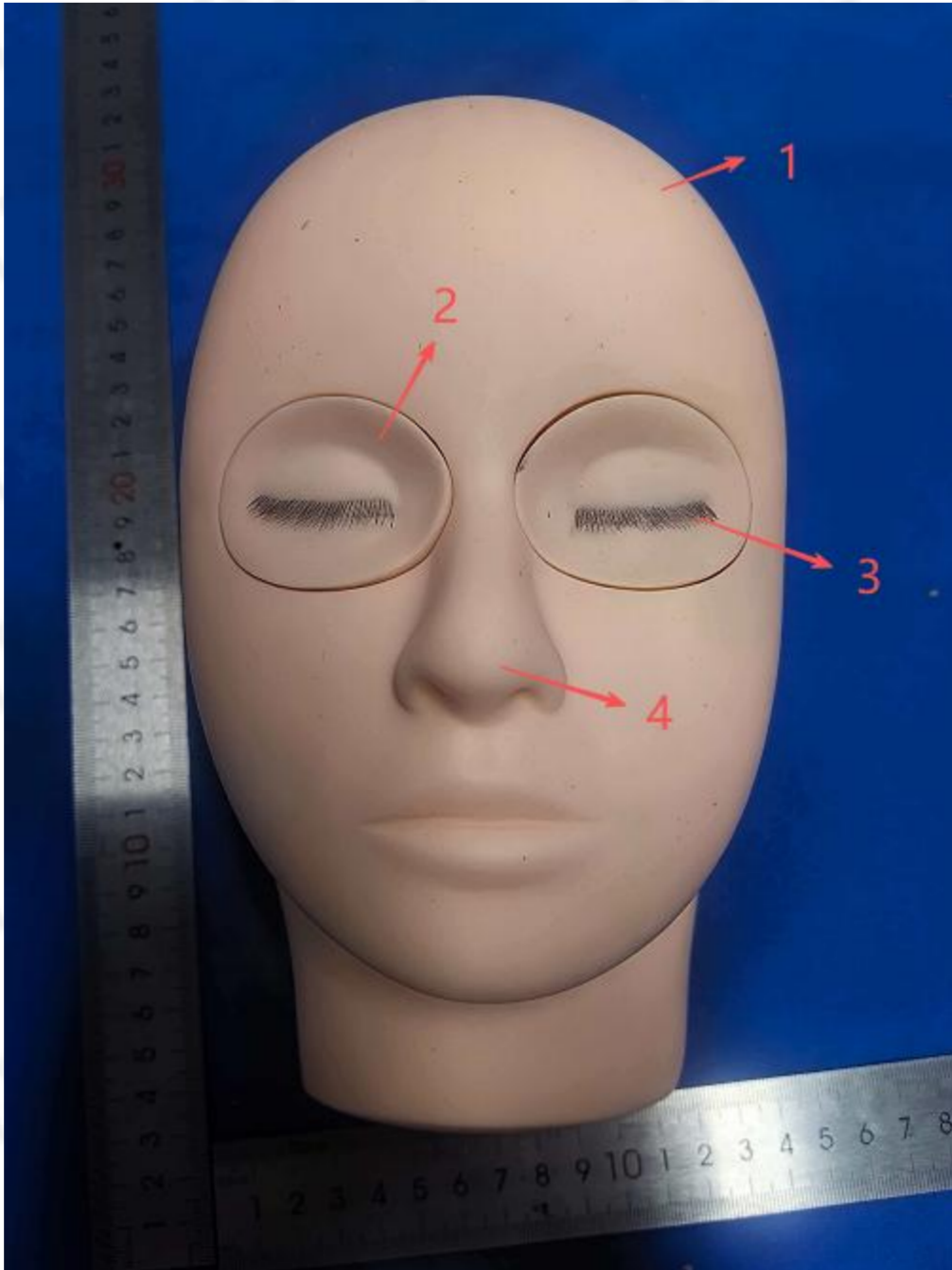
6th Floor, Bui Iding B, Quewei Building, No. 5 Fuyu Road, Pinghu Street, Longgang District, Shenzhen,Guangdong, China

Tel: 4008857980

Website: www.tqts.com

E-mail: service@tqts.com

### Sample image



This test report is issued by our company in accordance with the service terms printed on the back. Responsibilities, warranties, and legal limitations are defined in the service terms. Unless otherwise stated, the results of this report are solely for the test sample. This report may not be reproduced in part without permission.

Shenzhen Tianqi Testing Technology Service Co., Ltd.

6th Floor, Bui Iding B, Quewei Building, No. 5 Fuyu Road, Pinghu Street, Longgang District, Shenzhen, Guangdong, China

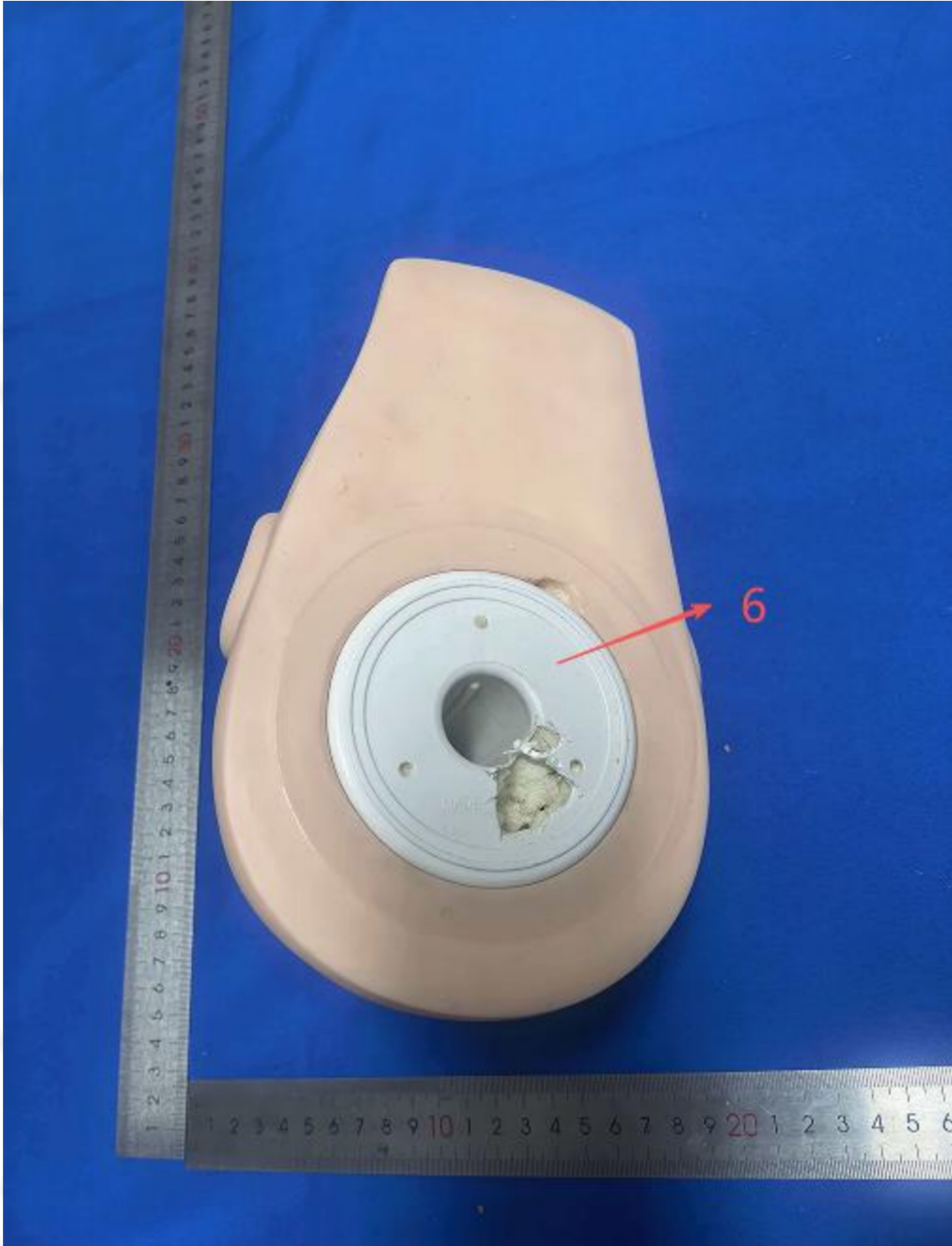
Tel: 4008857980

Website: [www.tqts.com](http://www.tqts.com)

E-mail: [service@tqts.com](mailto:service@tqts.com)



This test report is issued by our company in accordance with the service terms printed on the back. Responsibilities, warranties, and legal limitations are defined in the service terms. Unless otherwise stated, the results of this report are solely for the test sample. This report may not be reproduced in part without permission.



This test report is issued by our company in accordance with the service terms printed on the back. Responsibilities, warranties, and legal limitations are defined in the service terms. Unless otherwise stated, the results of this report are solely for the test sample. This report may not be reproduced in part without permission.



\*\*\*\*\*

\*\*\* End of Report \*\*\*

This test report is issued by our company in accordance with the service terms printed on the back. Responsibilities, warranties, and legal limitations are defined in the service terms. Unless otherwise stated, the results of this report are solely for the test sample. This report may not be reproduced in part without permission.

Shenzhen Tianqi Testing Technology Service Co., Ltd.  
6th Floor, Bui Iding B, Quewei Building, No. 5 Fuyu Road, Pinghu Street, Longgang District, Shenzhen,Guangdong, China  
Tel: 4008857980 Website: www.tqts.com E-mail: service@tqts.com